



AI-X User Guide

Version 11.0



AI-X User Guide

Version 11.0.0

November 24, 2023

Copyright © 2023 Smart Eye AB. All rights reserved.

Smart Eye AB

Masthamnsgatan 3

413 27

Gothenburg

Sweden

www.smarteye.se

Contents

1 Introduction	1
1.1 Intended use	1
2 Software and System Requirements	2
2.1 System requirements	2
2.2 Compatible software	2
3 AI-X Hardware	3
3.1 What's in the box	3
3.2 Product care	3
4 Setup	4
4.1 Software installation	4
4.2 Mounting the eye tracker on a display	5
4.3 Create an eye tracker setup	6
4.3.1 Display setup	6
4.3.2 Phone setup	7
4.3.3 Tripod setup	7
5 Support	9
5.1 Troubleshooting	9
5.2 IR light interfering with other systems	9
5.3 Customer support	9
Appendix A Safety and Compliance	10
A.1 Compliance	10
A.2 Operating Temperature	10
Appendix B Technical Specifications	11

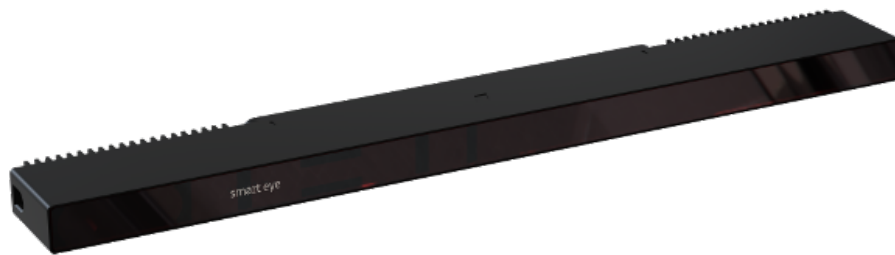
1 Introduction

The Smart Eye AI-X is a screen-based high-performance eye tracker. The AI-X design makes it easy to switch between different projects, displays, and situations.

This manual contains useful information about the AI-X eye tracker, ranging from safety and compliance to product care. It also contains information about the mounting procedure and software setup. If any questions or difficulties arises, do not hesitate to contact the support.

1.1 Intended use

The AI-X eye tracker is designed for screen-based eye tracking research within marketing, UX and media. The AI-X works well in all indoor illumination conditions, and offers precise and accurate eye tracking on displays up to 24”.



Smart Eye AI-X eye tracker



2 Software and System Requirements

2.1 System requirements

Operating System	Windows 10 Creators Update (version 1703) or higher
RAM	4 GB
CPU	Quad core 6th generation Intel Core or Intel Xeon processor or newer
Camera Interface	USB 3.0
Maximum Display Size	24" (16:9 aspect ratio)

2.2 Compatible software

iMotions	www.imotions.com
----------	--

3 AI-X Hardware

3.1 What's in the box

AI-X eye tracker

Two Chem Pad™ wipes for cleaning the mounting area

Two mounting brackets with tape

Safety and setup info note

3.2 Product care

The front glass of the eye tracker needs to be clean in order to ensure optimal tracking. If dirt or dust ends up on the front glass, the eye tracker has to be cleaned in a correct manner.

To clean the front glass use a dry microfiber cloth intended for cleaning cameras, camera lenses, or eyeglasses and carefully wipe the front glass. If unsupported cleaning methods are used the eye tracker might be damaged.

Warning! Do *not* use alcohol to clean the front glass, as it may damage the eye tracker!

4 Setup

This section describes the steps needed to setup your eye tracker. Install required software, mount the eye tracker and create a setup in the Smart Eye Setup tool.

4.1 Software installation

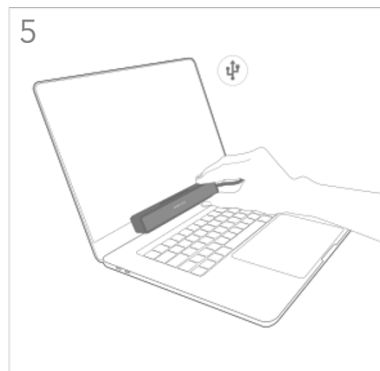
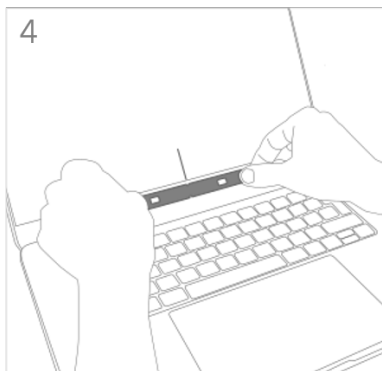
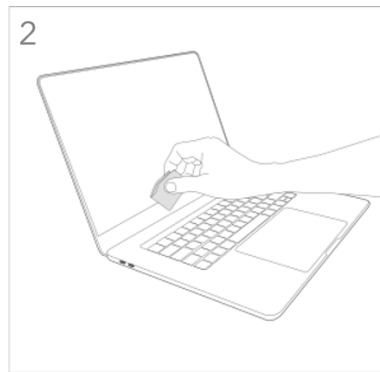
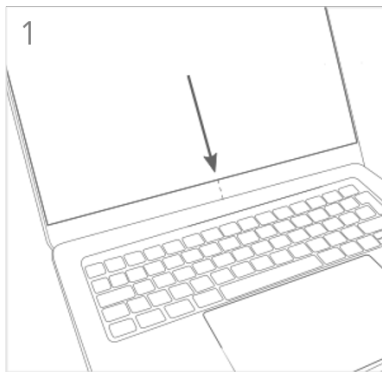
The software Smart Eye Tracker needs to be installed before using your eye tracker. Follow the installation steps below.

1. Launch the Smart Eye Tracker installer by double clicking it.
2. Click the *Install* button to start the installation.
3. A *User Account Control* window will be opened, click *Yes* to continue.
4. A *Windows Security* window will be opened, click *Install* to install eye tracker drivers. The installation may take a while.
5. Click the *Close* button when the installation has finished to exit the installer.

4.2 Mounting the eye tracker on a display

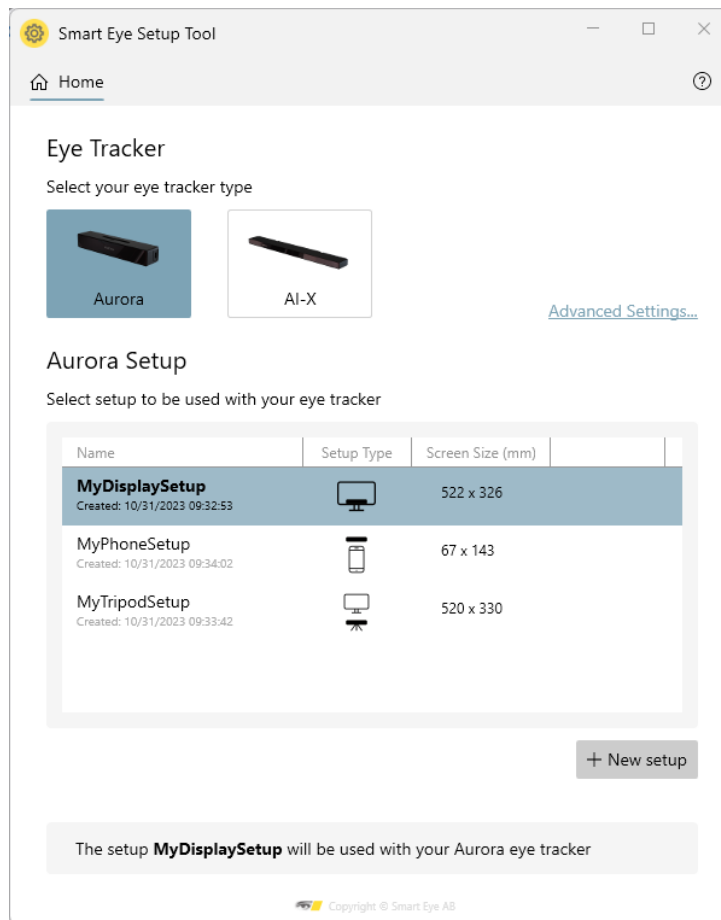
The mounting bracket and Chem Pad™ wipe can be found in the box. To mount the eye tracker follow the steps below:

1. Find the center of the lower display edge by marking manually or by using the center marker in the Smart Eye Setup Tool.
2. Clean the mounting area around the center with the Chem Pad™ wipe.
3. Remove the adhesive tape cover from the bracket.
4. Align the center of the bracket with the center of the lower display edge. Make sure the bracket is straight. Press and hold for 30 seconds.
5. Attach the eye tracker to the bracket and connect the eye tracker to the computer using the supplied cable. If the cable is of type USB-A, make sure to connect it to a USB 3.0 port on the computer.



4.3 Create an eye tracker setup

1. Run the Smart Eye Setup Tool. The Smart Eye Setup Tool is found in the Windows Start Menu.

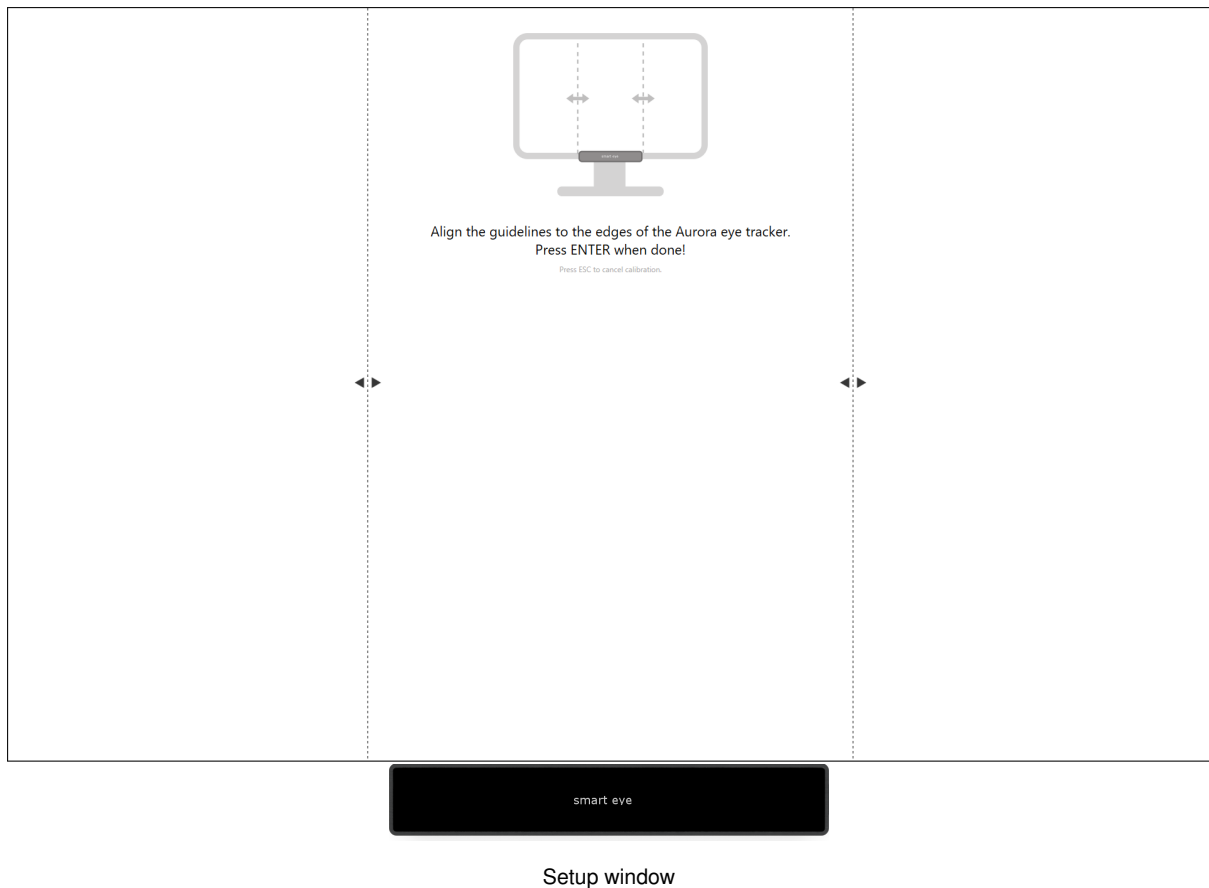


Smart Eye Setup Tool

2. Select your eye tracker.
3. Create a new setup by pressing the *New Setup* button.
4. Select your setup type and press *Next*. Follow the steps in the section of the chosen setup below.

4.3.1 Display setup

1. Specify on which display your eye tracker is mounted (if you have a single display setup, this step is not necessary). Click the *Identify* button if you are not sure which display your eye tracker is mounted to. To be able to identify your display a unique letter will be shown on each display connected to your computer.
2. Click the *Next* button. A full screen window will be opened on the display that your eye tracker is mounted to.



3. Setup your eye tracker by aligning the dashed lines to the edges of the eye tracker. Confirm the setup by pressing *Enter*.
4. Check that the size in the setup summary matches the size of the selected display.
5. Enter a file name for your setup and press *Finish*. The setup has now been saved and the Smart Eye Setup Tool can be closed.

4.3.2 Phone setup

1. Enter measurements of your phone and press *Next*. Note that the bezel size is the distance between the top of the phone and the top most edge of the screen (not including any indentations in which the front-facing camera is positioned).
2. Check that the size in the setup summary matches the size of your phone.
3. Enter a file name for your setup and press *Finish*. The setup has now been saved and the Smart Eye Setup Tool can be closed.

4.3.3 Tripod setup

1. Mount the eye tracker on the tripod, press *Next* when done.
2. Follow the instructions for positioning the tripod correctly. Press *Next* when done.

3. Control the subject position in your eye tracking application by following the instructions. Press *Next* when done.
4. Check that the eye tracker and display are aligned according to instructions.
Note that the tripod can not be moved after this step of the setup!
Press *Next* when done.
5. Enter the measurements of the display. Press *Next* when done.
6. Enter the tilt angle measurements of the eye tracker and display. Press *Next* when done.
7. Enter the measurements of height and length difference between the eye tracker front and the lower front of the display area. Press *Next* when done.
8. Check that the measurements in the setup summary matches your setup.
9. Enter a file name for your setup and press *Finish*. The setup has now been saved and the Smart Eye Setup Tool can be closed.

Note: Please note that if the tripod is moved after the setup has been saved a new tripod setup needs to be done in the Smart Eye Setup Tool!

5 Support

In this section you will find information about troubleshooting and support.

5.1 Troubleshooting

This section presents solutions to problems that you may encounter when using the eye tracker. If your problems persist or if you don't find any solution here, please contact support.

I can't install Smart Eye Tracker or Smart Eye Pro XO software.

Make sure you have admin rights on the computer where you attempt to install the software.

The laptop goes to sleep when I connect the eye tracker to the bracket.

The eye tracker contains a magnet to make sure it attaches to the magnetic holder. Some laptop models also have a magnet in the lid to make sure the computer sleeps when the lid is closed. Change the setting so the computer stays awake even when lid is closed. This setting is found in the *Hardware and Sound* → *Power Options* menu in the *Control Panel*.

There seems to be problem with the connection to the eye tracker.

Try unplugging the eye tracker and plugging it in again. Other programs might interfere with the eye tracker connection. Make sure Microsoft Teams and similar programs are not running.

The framerate is low or fluctuates.

Make sure that the computer is connected to a power source and that a high performance Windows power plan is used. The power plan can be set in the *Power Options* menu in the *Control Panel*. Create a new power plan and make sure the high performance option is chosen.

5.2 IR light interfering with other systems

The infrared illumination emitted from the IR-flashes of your eye tracker may interfere with other systems that contains infrared sensors such as video cameras, motion capture systems, fNIRS equipment and others. There are measures that can be taken to eliminate or reduce the interference. Please consult Smart Eye support if you are experiencing this issue.

5.3 Customer support

If you need any help or support with your eye tracker, please contact your sales representative or retailer.

Appendix A Safety and Compliance

A.1 Compliance

The statements in this section apply to the AI-X eye tracking device.

Safety standards:	IEC 62368
	IEC 62471

Declaration of conformity:	EU Directive 2014/30/EU (EMC)
	EU Directive 2011/65/EU (RoHS)

A.2 Operating Temperature

The AI-X eye tracker has been tested at normal operating conditions during a 24 hours period with an ambient temperature of 25 degrees. After approximately one hour of use the device reaches a stable temperature which is maintained until the tracker is turned off. The maximum temperature on the outside of the device was 36 degrees during the test. The AI-X eye tracker is designed with a good margin to operate at a temperature of 36 degrees and neither the function nor the lifespan of the product is adversely affected. The temperature 36 degrees is not harmful to the user, although the device may be experienced as unexpectedly warm to the touch.

Appendix B Technical Specifications

Sampling Rate	60 Hz
Headbox (Freedom of head movement)	35 x 30 cm at 65 cm distance
Operating Distance	45 - 85 cm
Accuracy	0.5 degrees (typ.)
Precision	0.1 degrees (typ.)
Output Data	Gaze point, pupil diameter, time stamp All outputs as binocular data with associated quality index
Blink Recovery Time	1 frame (immediate)
Gaze Recovery Time	1 frame (immediate)
Latency	25 ms from camera exposure
Eye Tracking Principle	Dark pupil and corneal reflection
Maximum Display Size	24" (16:9 aspect ratio)
Operating Environment	Indoor (all illumination conditions)
Size	268 x 13 x 32 mm (width x height x depth)
Weight	147 g
Cable Length	2 m
Camera Interface	USB 3.0
Mount Type	On display (with mounting plate)
Operating System	Windows 10 and 11